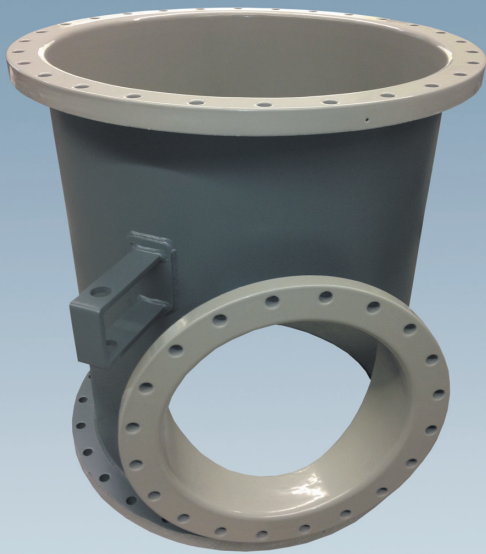


A PRODUCT OF OUR LINE ULTRA⁺

**Chemical protection at highest level,
 with very best permeation properties**

ETFE ultra⁺



The material for this Fluoropolymer-coating, which will be applied with a specific method, is highly resistant against chemicals and acids, and has extraordinary advantages, compared with common coating and lining systems:

- Seamless lining for almost all designs
- No welded joints
- Excellent bonding to substrate
- Compared with usual ETFE outstanding features in permeation by using filler.
- Layer thickness from 200 µm up to 2 mm
- Comparable in many ways to our PFA ultra⁺ – however the more economically favourable solution.

- ETFE ultra⁺** Exceptional, universal chemical resistance at high temperatures
- ETFE ultra⁺** Excellent when proven under clean room conditions
- ETFE ultra⁺** Also available in the electrical conductive version
- ETFE ultra⁺** Locally repairable
- ETFE ultra⁺** Solvent-resistant
- ETFE ultra⁺** Easy to clean, excellent non-stick properties
- ETFE ultra⁺** Non flammable
- ETFE ultra⁺** Cold resistant
- ETFE ultra⁺** Best permeation properties
- ETFE ultra⁺** Suitable for vacuum
- ETFE ultra⁺** FDA- and EU-compliant

RUDOLF GUTBROD GmbH
 Im Schwöllbogen 10, 72581 Dettingen/Erms, Germany, Tel. +49 (0)71 23 - 97 35-0, Fax +49 (0)71 23 - 97 35-30
 www.gutbrod-ptfe.de, e-mail: info@gutbrod-ptfe.de