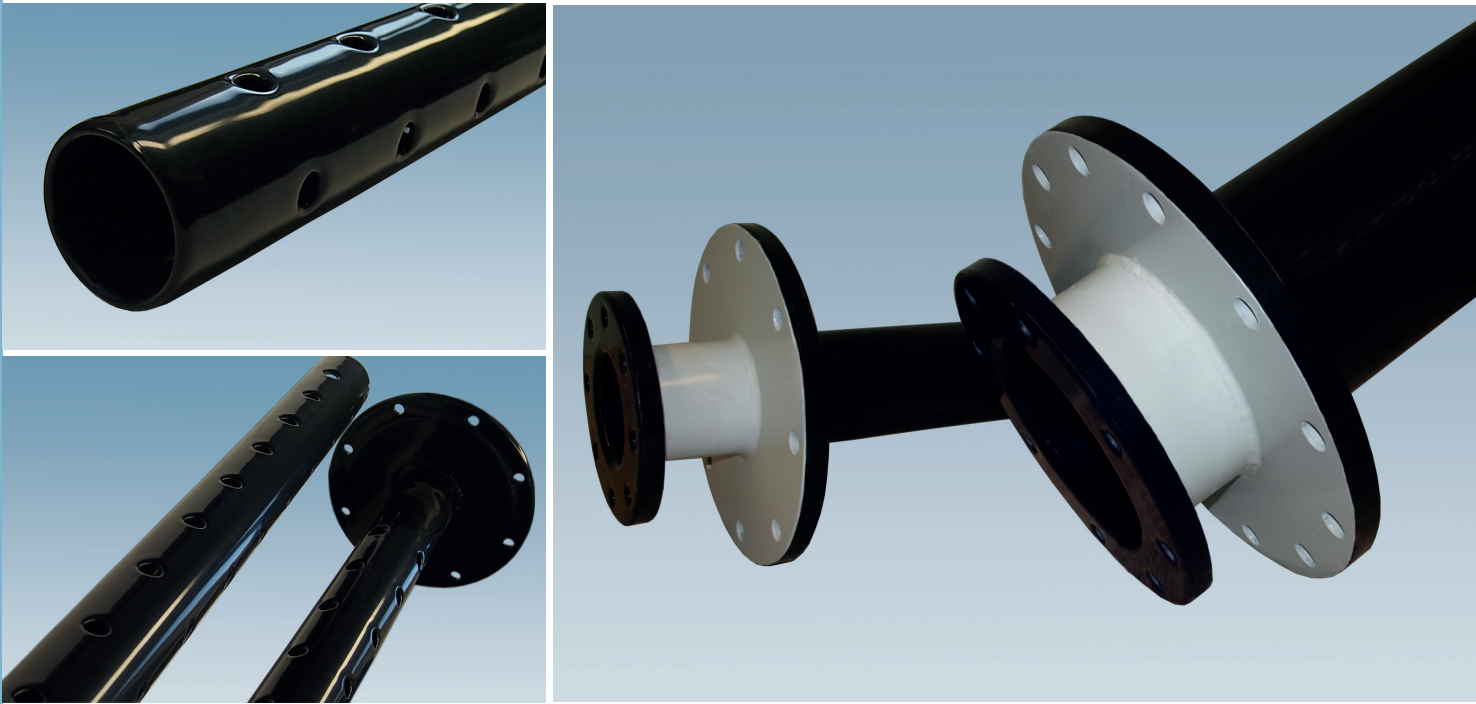


Innovation for immersion-tubes

ETFE^{nova} – especially for immersion-tubes



The material for this Fluoropolymer-coating, which will be applied with a specific method, is highly resistant against chemicals and acids, and has extraordinarily advantages, compared with common coating and lining systems:

- Seamless lining
- No welded joints
- No glue
- Excellent bonding to the substrate
- Variable layer thickness up to 3 mm

ETFE^{nova} Exceptional, universal chemical resistance at high temperatures

ETFE^{nova} Outstanding features in permeation by using filler

ETFE^{nova} Also available in electrical conductive version

ETFE^{nova} Locally repairable

ETFE^{nova} Solvent-resistant

ETFE^{nova} Easy to clean, excellent non-stick properties

ETFE^{nova} Non flammable

ETFE^{nova} Cold-resistant

ETFE^{nova} Best permeation properties

ETFE^{nova} Suitable for vacuum

ETFE^{nova} FDA- and EU-compliant, in line with build up of ETFE ultra⁺

RUDOLF GUTBROD GmbH

Im Schwöllbogen 10, 72581 Dettingen/Erms, Germany, Tel. +49 (0)71 23 - 97 35-0, Fax +49 (0)71 23 - 97 35-30
 www.gutbrod-ptfe.de, e-mail: info@gutbrod-ptfe.de