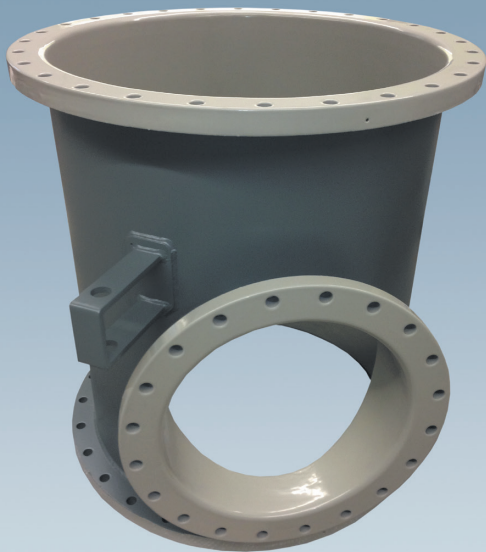


**A PRODUCT OF OUR LINE ULTRA<sup>+</sup>**

**Chemical protection at highest level,  
 with very best permeation properties**

**ETFE ultra<sup>+</sup>**



The material for this Fluoropolymer-coating, which will be applied with a specific method, is highly resistant against chemicals and acids, and has extraordinarily advantages, compared with common coating and lining systems:

- Seamless lining for almost all designs
- No welded joints
- Excellent bonding to substrate
- Compared with usual ETFE outstanding features in permeation by using filler.
- Layer thickness from 200 µm up to 2 mm
- Comparable in many ways to our PFA ultra<sup>+</sup> – however the more economically favourable solution.

- ETFE ultra<sup>+</sup>** Exceptional, universal chemical resistance at high temperatures
- ETFE ultra<sup>+</sup>** Excellent when proven under clean room conditions
- ETFE ultra<sup>+</sup>** Also available in the electrical conductive version
- ETFE ultra<sup>+</sup>** Locally repairable
- ETFE ultra<sup>+</sup>** Solvent-resistant
- ETFE ultra<sup>+</sup>** Easy to clean, excellent non-stick properties
- ETFE ultra<sup>+</sup>** Non flammable
- ETFE ultra<sup>+</sup>** Cold resistant
- ETFE ultra<sup>+</sup>** Best permeation properties
- ETFE ultra<sup>+</sup>** Suitable for vacuum
- ETFE ultra<sup>+</sup>** FDA- and EU-compliant

**RUDOLF GUTBROD GmbH**  
 Im Schwöllbogen 10, 72581 Dettingen/Erms, Germany, Tel. +49 (0)71 23 - 97 35-0  
 www.gutbrod-ptfe.de, e-mail: info@gutbrod-ptfe.de



All statements, information and data are given to the best of our knowledge. A guarantee, obligation or liability cannot be derived from this in any way. Gutbrod reserves the right to make changes to the product range and to product extensions. EN\_11/2017