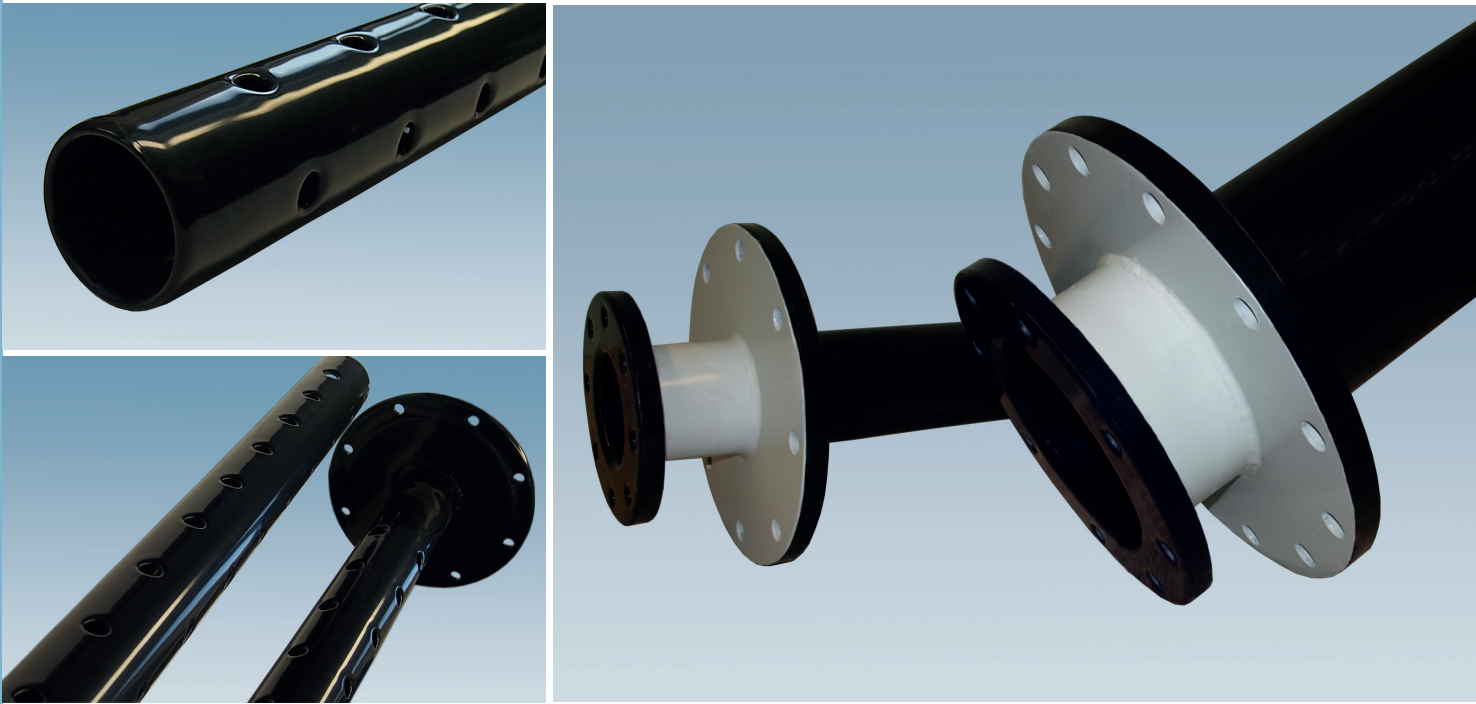


## Innovation for immersion-tubes

# ETFE<sup>nova</sup> – especially for immersion-tubes



The material for this Fluoropolymer-coating, which will be applied with a specific method, is highly resistant against chemicals and acids, and has extraordinarily advantages, compared with common coating and lining systems:

- Seamless lining
- No welded joints
- No glue
- Excellent bonding to the substrate
- Variable layer thickness up to 3 mm

**ETFE<sup>nova</sup>** Exceptional, universal chemical resistance at high temperatures

**ETFE<sup>nova</sup>** Outstanding features in permeation by using filler

**ETFE<sup>nova</sup>** Also available in electrical conductive version

**ETFE<sup>nova</sup>** Locally repairable

**ETFE<sup>nova</sup>** Solvent-resistant

**ETFE<sup>nova</sup>** Easy to clean, excellent non-stick properties

**ETFE<sup>nova</sup>** Non flammable

**ETFE<sup>nova</sup>** Cold-resistant

**ETFE<sup>nova</sup>** Best permeation properties

**ETFE<sup>nova</sup>** Suitable for vacuum

**ETFE<sup>nova</sup>** FDA- and EU-compliant, in line with build up of ETFE ultra<sup>+</sup>

### RUDOLF GUTBROD GmbH

Im Schwöllbogen 10, 72581 Dettingen/Erms, Germany, Tel. +49 (0)71 23 - 97 35-0  
 www.gutbrod-ptfe.de, e-mail: info@gutbrod-ptfe.de

