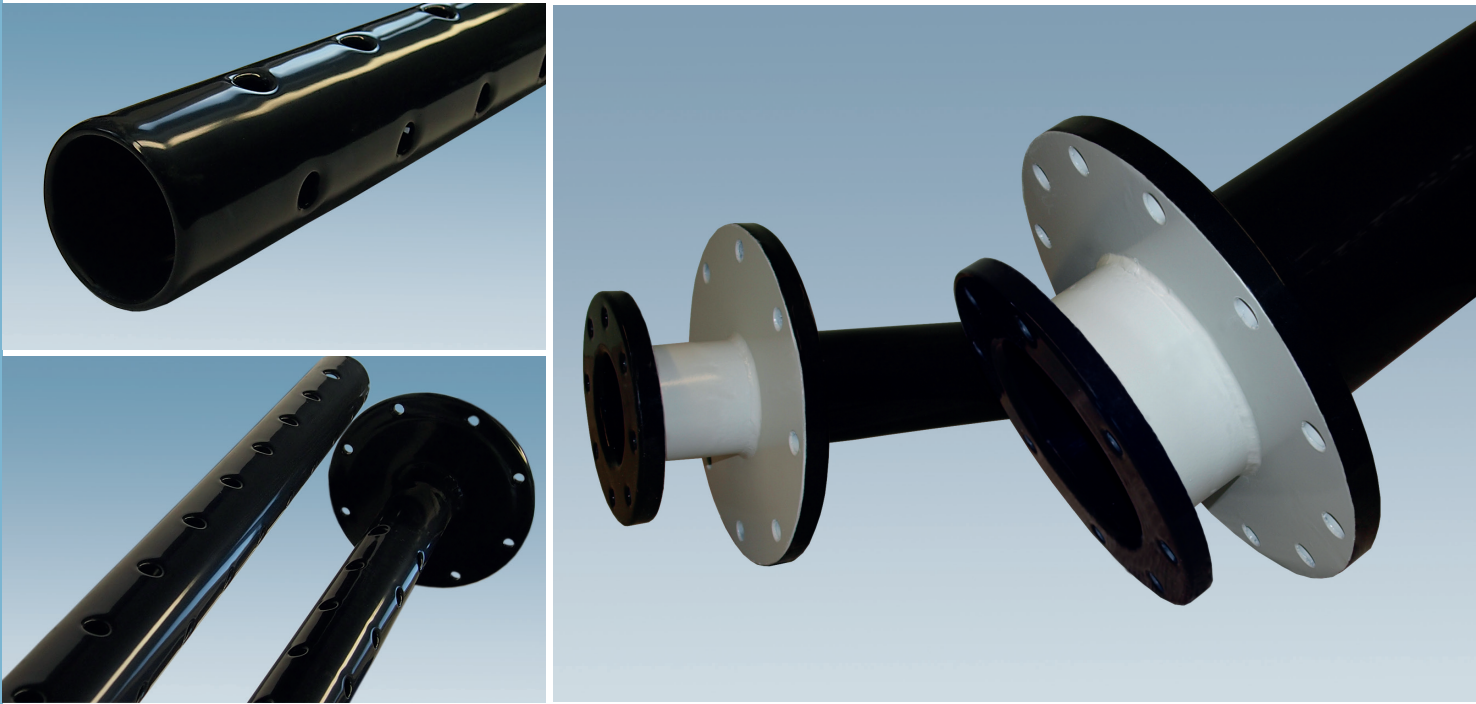


Innovation for immersion-tubes

ETFE^{nova} – especially for immersion-tubes



The material for this Fluoropolymer-coating, which will be applied with a specific method, is highly resistant against chemicals and acids, and has extraordinarily advantages, compared with common coating and lining systems:

- Seamless lining
- No welded joints
- No glue
- Excellent bonding to the substrate
- Variable layer thickness up to 2 mm

- ETFE^{nova}** Exceptional, universal chemical resistance at high temperatures
- ETFE^{nova}** Outstanding features in permeation by using filler
- ETFE^{nova}** Also available in electrical conductive version
- ETFE^{nova}** Locally repairable
- ETFE^{nova}** Solvent-resistant
- ETFE^{nova}** Easy to clean, excellent non-stick properties
- ETFE^{nova}** Non flammable
- ETFE^{nova}** Cold-resistant
- ETFE^{nova}** Best permeation properties
- ETFE^{nova}** Suitable for vacuum
- ETFE^{nova}** FDA- and EU-compliant, in line with build up of ETFE ultra*

RUDOLF GUTBROD GmbH

Im Schwöllbogen 10, 72581 Dettingen/Erms, Germany, Tel. +49 (0)71 23 - 97 35-0
 www.gutbrod-ptfe.de, e-mail: info@gutbrod-ptfe.de

